

NDLAMBE MUNICIPALITY



SUPPLY AND DELIVERY OF A WENDY HOUSE

Service Providers are hereby invited to submit quotations for Supply and Delivery of a Wendy House.

SPECIFICATION

GENERAL NOTES FOR HALF LOG CONSTRUCTION AND TIMBER CONSTRUCTION

1. All work to comply and to be in accordance with SABS 082 and with NHBR Standards.
2. All timber 500mm above ground level to be treated with "Flambor".
3. All Timber form 500mm above ground level and down into the ground to be treated with "Copper-Chrome-Arsenic"
4. All Timber 500mm above ground level to be treated with "Satinwood 28" to protect wood against rodents.
5. All Timber 500mm above ground level to be treated with "Flambor" as fire retardant.
6. Excavate ground clear to clear if required.

NO.	DESCRIPTION	QUANTITY
1.	<u>ROOF CONSTRUCTION</u> 25 Deg. Pitch colour bond roof covering on 75x50mm. Purlins at pitch as show on trusses as per schedule. Trussed at corners as shown. Trusses on 38x114 wall plates ceiling on 38x38 battens onto trusses. Isothermal Insulation on ceilings 40mm.Min. thick 100x125mm gutters 76 DIA RWDP. ASBESTOS Cement Fascia and Barge board	1
2.	<u>EXTERNAL WALLS</u> <u>SOLID WALLS</u> <ol style="list-style-type: none">1. Solid walls to be 100mm DIA MIN.2. All electrical or plumbing Services to be done in studs and not deeper than 25mm and wider than 25mm.3. All services to be covered with cover strips of same type timber. <u>INTERNAL WALLS</u> <ol style="list-style-type: none">1. Solid walls to be 100mm DIA MIN.2. All electrical or plumbing services to be done in studs and not deeper than 25mm and wider than 25mm.3. All services to be covered with cover strips or same type timber.	1
3.	<u>TIMBER FRAMES</u> <ol style="list-style-type: none">1. All Timber frame walls to have studs of MIN 38x76 TIM. Grade 7 or 38x114 Timber grades at 600ccs max with thermal insulation in frame.2. All external timber frame wall to be cladded with min 12.5mm boards or slats on inside with vapour check membrane between cladding and frame and 38mm Min cladding with boards or slats or log profile cladding on outside with breather membrane between cladding and framework.3. Timer lintels to be accordance with SABS 082 and NHBR Standards.4. All Timber walls with studs 38x76 Timber grade 7 may not be notched for services at all.5. All Timber walls with studs 38x114 timber grade 5 may be notched for services only as described in SABS 082 to prevent weakening of structure.6. All timber frame to have approved cross bracing ventral strips to secure stability.	1

Bidders Shall Take Note of the Following Bid Conditions:

1. The Prices must be valid for at least ninety (90) days from the closing date.
2. The Prices quoted must be firm and must be inclusive of VAT and delivery.
3. Ndlambe Municipality does not bind itself to accept the lowest bid or any other bid and reserve the right to accept the whole part of the bid.
4. Bids that are late will not be considered, whilst the lowest or only quotation will not necessarily be accepted. Quotations per fax or E-mail will also not be considered.
5. Company profile and registration information must be provided.
6. A tax clearance certificate issued by SARS must accompany all quotations OR a tax reference number and PIN or TCC number must be provided.
7. Bidders must complete Council's Declaration of Interest form (**MBD4**).
8. Bidders must complete Certificate of Independent Bid Determination (**MBD9**).
9. Bidders who wish to claim for preferential points in terms of the Preferential Procurement Regulations, 2017, must submit a completed form **MBD 6.1** as well as a certified copy of the proof of B-BBEE status level of contribution.
10. A Municipal Billing Clearance Certificate must accompany all bids (in the event of a bidder being a company, also in respect of any of its directors).
11. Evidence of registration of company on the Central Supplier Database (CSD) must be provided (Supplier Number).

It should be noted that the 80/20 points system will be applied, 80 being for price and 20 for the B-BBEE status level as defined in the Preferential Procurement Regulations, 2017.

The abovementioned MBD forms are available for download from:

http://www.ndlambe.gov.za/index.php?option=com_docman&task=cat_view&Itemid=&gid=46

Further Details may be obtained from Miss Vathiswa Yose, on 046 604 5597 or email (vyose@ndlambe.gov.za)

Quotations must be placed in sealed envelopes marked "**SUPPLY AND DELIVERY OF A WENDY HOUSE**" and must be deposited in the tender box at The Causeway, Port Alfred, not later than **12h00 on Friday, 26 May 2017**, when tenders will be opened in public.

NOTICE NUMBER 88/2017

DATE: 17 May 2017

ADV R DUMEZWENI

MUNICIPAL MANAGER

NOTICE BOARDS,

MUNICIPAL WEBSITE

SABS Mark-Bearing Treated Timber and Poles

By its strict and impartial judgement, the Timber Department of the South African Bureau of Standards (SABS) ensures that consumers get value for their money.

Well-trained SABS technicians are ready to render their services to manufacturers and purchasers, and to advise them on the requirements of SABS standards. SABS representatives are stationed in Tzaneen, White River, Sabie, Pretoria (head office), Durban, Jeffrey's Bay, George and Cape Town. See the Back of this leaflet for contact details.

The SABS laboratory in Pretoria is equipped to carry out tests and analyses on various timber and related products. During visits to the SABS Head Office, it is not uncommon to see timber products such as doors, adhesives, preservative-treated timber and charcoal being tested.

Standards are prepared, maintained and revised by the SABS to ensure that products that carry the SABS mark comply with certain set requirements. These standards are prepared and revised by technical committees representing various interested parties.

The standards on preservative-treated timber and poles have recently been revised to make them more user friendly and to make the public aware of the fact that the end-use of the product determines the extent to which it is treated.

Timber intended for use in the coastal regions and poles use anywhere in South Africa must be treated in compliance with SABS standards. In many cases, losses and timber/pole failure are the result of the following three major causes:

the use of untreated timber/poles; the use of lower hazard class timber/poles in a higher hazard class application; and ineffective preservation treatment for the specific hazard class.

It is important to bear the end-use of the product in mind when buying treated timber/poles.

The following marks appear on treated timber/poles:

- H2: for interior use;
- H3: for exterior use but not in ground contact;
- H4: for exterior use in ground contact;
- H5: for exterior use in contact with fresh water or heavy wet soil;
- H6: for exterior use in contact with estuarine or sea water.

For peace of mind, make sure that, no matter what timber or poles you buy, it bears the SABS stamp of approval.

SABS

GENERAL NOTES FOR SOLID LOGCONSTRUCTION AND TIMBER CONSTRUCTION:

- GROUND WORK:
 - ALL WORK TO COMPLY AND TO BE IN ACCORDANCE WITH SABS 082 AND WITH NHRC STANDARDS
 - SMALL TIMBER 500mm ABOVE GROUND LEVEL TO BE TREATED WITH COPPER-CHROME-ARSENIC
 - SMALL TIMBER FROM 500mm ABOVE GROUND LEVEL AND DOWN INTO THE GROUND TO BE TREATED WITH "COPPER-CHROME-ARSENIC"
 - LARGE TIMBER 500mm ABOVE GROUND LEVEL TO BE TREATED WITH COPPER-CHROME-ARSENIC
 - LARGE TIMBER 500mm ABOVE GROUND LEVEL TO BE TREATED WITH FLAMBERK AS FIRE RETARDANT
 - EXCAVATE GROUND CLEAR TO CLEAR IF REQUIRED.

- ## ROOF CONSTRUCTION:
- 25 DEG PITCH COLOURBOND ROOF COVERING ON TRUSSES AS PER AS SHOWN.
 - TRUSSES 8 CFS AS SHOWN.
 - TRUSSES 8 CFS AS SHOWN.
 - CELLING ON 38X114 WALL PLATES
 - INSULATION ON CEILING
 - 100X125MM GUTTERS
 - 76 DIA R/VPJ
 - ASCENSION FASCIA AND BARGE BOARD.

EXTERNAL WALLS

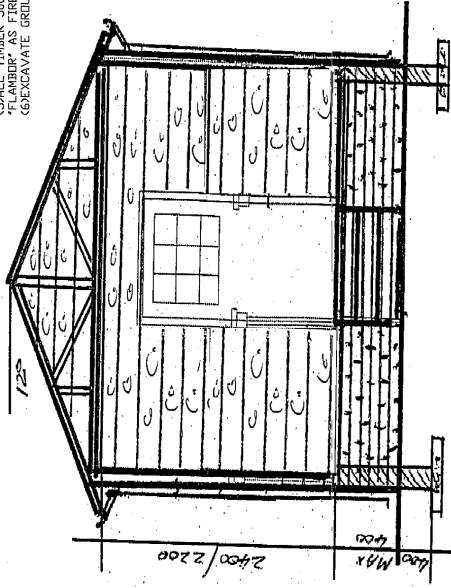
- ### SOLID WALLS
- SOLID WALLS TO BE 100mm DIA MIN.
 - ALL ELECTRICAL OR PLUMBING SERVICES TO BE DONE IN STUDS AND NOT DEEPER THAN 25mm AND WIDER THAN 25mm.
 - ALL SERVICES TO BE COVERED WITH COVER STRIPS OF SAME TYPE TIMBER.

INTERNAL WALLS

- SOLID WALLS TO BE 100mm DIA MIN.
- ALL ELECTRICAL OR PLUMBING SERVICES TO BE DONE IN STUDS AND NOT DEEPER THAN 25mm AND WIDER THAN 25mm.
- ALL SERVICES TO BE COVERED WITH COVER STRIPS OF SAME TYPE TIMBER.

TIMBER FRAMES

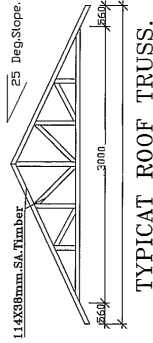
- ALL TIMBER FRAME WALLS TO HAVE STUDS OF MIN 38X76 TIMBER GRADE 7 OR 38X114 TIMBER GRADES AT 600mm MAX WITH THERMAL INSULATION IN FRAME AND EXTERIOR FINISH WALLS TO BE CLADDED WITH MEMBRANE BETWEEN CLADDING AND FRAME AND 38mm MIN CLADDING WITH BOARDS OR SLATS OR LOG PROFILE CLADDING ON OUTSIDE
- 30TIMBER LIMITS
- CLADDING TO BE IN ACCORDANCE WITH SABS 082 AND 084
- ALL TIMBER WALLS WITH STUDS 38X76 TIMBER GRADE 7 MAY NOT BE NOTCHED FOR SERVICES AT ALL
- ALL TIMBER WALLS WITH STUDS 38X114 TIMBER GRADE 5 MAY BE NOTCHED FOR SERVICES ONLY AS DESCRIBED IN SABS 082 TO PREVENT WEAKENING OF STRUCTURE.
- ALL WALLS TO HAVE APPROVED CROSS BRACING VENTRAL STRIPS TO SECURE STABILITY



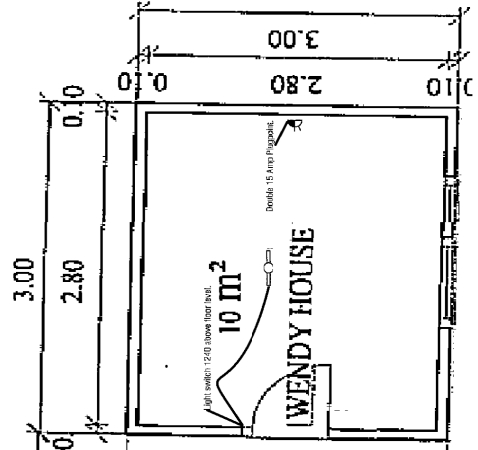
SECTION A-A 1/100

ELECTRICAL LEGEND	
	Distribution board 1500 amp floor level.
	Ceiling mounted light fitting.
	Wall mounted light fitting.
	Waterproof ceiling mounted light fitting.
	Outside waterproof wall light.
	Surface ceiling mounted floor light.
	Telephone connection.
	TV connection.
	50 Liter 1500 amp power connection.
	100 Liter 2000 amp power connection.
	150 Liter 3000 amp power connection.
	15 Amp Plugpoint.
	Double 15 Amp Plugpoint.
	Light dimmer switch.
	Light switch 1200 above floor level.
	Two-way light switch.
	Bell switch.
	Bell.
	Treat with waterborne anti-fungal.
	MSA Spotlight.
	Over connection.
	Under connection.
	Single fluorescent light fitting.
	Double fluorescent light fitting.
	Intercom unit.

Drawn by:	
Checked by:	
Checked by:	
Scale:	
Municipal Stamp	
Project number	
Supplier	



TYPICAL ROOF TRUSS.



FIRST FLOOR PLAN

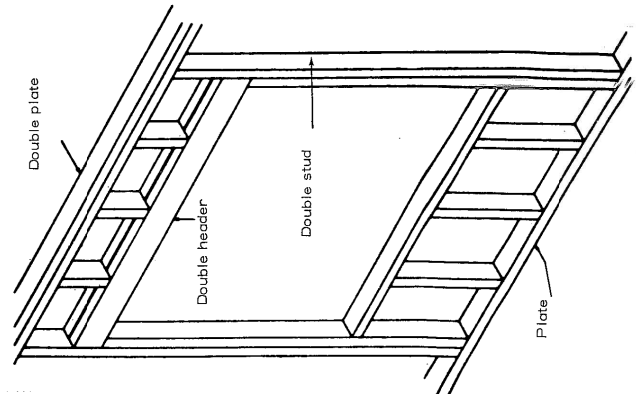
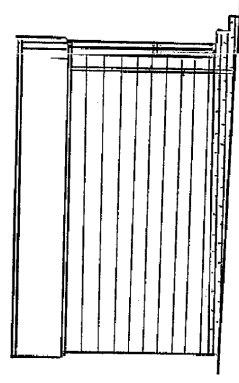
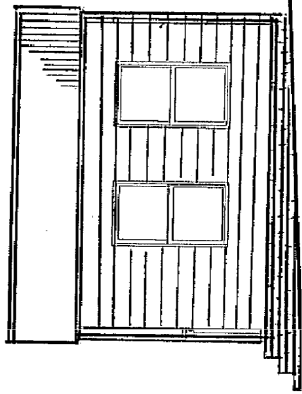


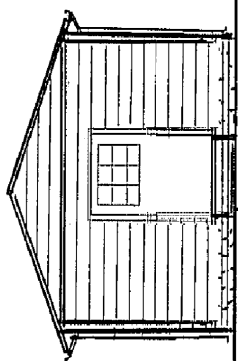
Fig. 22 - Framing around Exterior Wall Opening using Header and Double Studs



WEST ELEVATION



EAST ELEVATION



NORTH ELEVATION

NDLAMBE MUNICIPALITY
Port Alfred

<p>010 931 1148 010 931 1149 Post: 61170 Post Office: 61170</p>	<p>INFRASTRUCTURAL DEVELOPMENT</p>
<p>Client: _____</p> <p>INFRASTRUCTURAL DEVELOPMENT</p> <p>Project: _____</p>	
<p>NEW OFFICE FOR COUNCILORS</p>	